

Алматы (7273)495-231
Ангарск (3955)60-70-56
Архангельск (8182)63-90-72
Астрахань (8512)99-46-04
Барнаул (3852)73-04-60
Белгород (4722)40-23-64
Благовещенск (4162)22-76-07
Брянск (4832)59-03-52
Владивосток (423)249-28-31
Владикавказ (8672)28-90-48
Владимир (4922)49-43-18
Волгоград (844)278-03-48
Вологда (8172)26-41-59
Воронеж (473)204-51-73
Екатеринбург (343)384-55-89

Иваново (4932)77-34-06
Ижевск (3412)26-03-58
Иркутск (395)279-98-46
Казань (843)206-01-48
Калининград (4012)72-03-81
Калуга (4842)92-23-67
Кемерово (3842)65-04-62
Киров (8332)68-02-04
Коломна (4966)23-41-49
Кострома (4942)77-07-48
Краснодар (861)203-40-90
Красноярск (391)204-63-61
Курск (4712)77-13-04
Курган (3522)50-90-47
Липецк (4742)52-20-81

Магнитогорск (3519)55-03-13
Москва (495)268-04-70
Мурманск (8152)59-64-93
Набережные Челны (8552)20-53-41
Нижний Новгород (831)429-08-12
Новокузнецк (3843)20-46-81
Ноябрьск (3496)41-32-12
Новосибирск (383)227-86-73
Омск (3812)21-46-40
Орел (4862)44-53-42
Оренбург (3532)37-68-04
Пенза (8412)22-31-16
Петрозаводск (8142)55-98-37
Псков (8112)59-10-37

Пермь (342)205-81-47
Ростов-на-Дону (863)308-18-15
Рязань (4912)46-61-64
Самара (846)206-03-16
Саранск (8342)22-96-24
Санкт-Петербург (812)309-46-40
Саратов (845)249-38-78
Севастополь (8692)22-31-93
Симферополь (3652)67-13-56
Смоленск (4812)29-41-54
Сочи (862)225-72-31
Ставрополь (8652)20-65-13
Сургут (3462)77-98-35
Сыктывкар (8212)25-95-17
Тамбов (4752)50-40-97

Тверь (4822)63-31-35
Тольятти (8482)63-91-07
Томск (3822)98-41-53
Тула (4872)33-79-87
Тюмень (3452)66-21-18
Ульяновск (8422)24-23-59
Улан-Удэ (3012)59-97-51
Уфа (347)229-48-12
Хабаровск (4212)92-98-04
Чебоксары (8352)28-53-07
Челябинск (351)202-03-61
Череповец (8202)49-02-64
Чита (3022)38-34-83
Якутск (4112)23-90-97
Ярославль (4852)69-52-93

Россия +7(495)268-04-70

Казахстан +7(7172)727-132

Киргизия +996(312)96-26-47

www.aptiv.nt-rt.ru | | avi@nt-rt.ru

Технические характеристики на штыревые разъемы Generic Pinheaders, SICMA КОМПАНИИ **ARTIV PLC**

Виды товаров: 64-контактные, 8-контактные, 5-контактные, 56-контактные, 10-контактные, 4-контактные, 24-контактные, 48-контактные, 90-контактные, 90-контактные, гибридные, соединительные и др.



SICMA Pinheader Sealed Full Interconnect

Application: Engine management with gas converter, Automatic gear box management



Product Highlights

BENEFITS

- Market standard footprint interface-to-device headers
- Sliding lever can be installed in right and left position

FEATURES

- Wire-to-Electronic Printed Circuit Board (PCB) solution for electronic control units
- Sealed connection from harness wiring to electronic equipment



Part Number: 33501039
Application: Engine management with
generator, Automatic
gear management

Product Name: SICMA Pinheader
**Old/Legacy Part
Number:** Sealed Full
Interconnect
HCCPHPE24BKA90F

24 way M Hybrid 1.5 2.8 SICMA Interconnect Header Connector



Attributes

Product Family SICMA	Color BLACK
Product Series Pinheader Sealed Full Interconnect	Primary Locking Mechanism CAVITY LOCK
Max. operating temperature +125°C	Weight (g) 11.2
Min. operating temperature -40°C	Terminal 1 Size 1.5
No. of Ways 24	Terminal 2 Size 2.8
Gender Male	Sealing Unsealed
Length (mm) 46.2	Primary Material PBT GF 15
Width (mm) 27.3	
Height (mm) 40.2	



Part Number: 33508365

Application: Engine management with gas converter, Automatic gear box management

Product Name: SICMA Pinheader Sealed Full Interconnect

90 way M SICMA Interconnect Header Connector

Ordering samples is temporarily unavailable for this item

Attributes

Product Family SICMA	Height (mm) 32
Product Series Pinheader Sealed Full Interconnect	Color BLACK
Max. operating temperature +125°C	Primary Locking Mechanism CAVITY LOCK
Min. operating temperature -40°C	Weight (g) 130
No. of Ways 90	Sealing Unsealed
Gender Male	Primary Material PBT
Length (mm) 27	
Width (mm) 147.02	



Part Number: 33508361

Application: Engine management with gas converter, Automatic gear box management

Product Name: [SICMA Pinheader Sealed Full Interconnect](#)

Old/Legacy Part Number: F159000

6 way M Hybrid 1.5 2.8 SICMA Interconnect Header Connector

This part is not currently offered in our sample program.



Attributes

Product Family SICMA	Color BLACK
Product Series Pinheader Sealed Full Interconnect	Primary Locking Mechanism CAVITY LOCK
Max. operating temperature +125°C	Weight (g) 9.44
Min. operating temperature -40°C	Terminal 1 Size 1.5
No. of Ways 6	Terminal 2 Size 2.8
Gender Male	Sealing Unsealed
Length (mm) 41	Primary Material PA6T6 GF 35
Width (mm) 36.8	
Height (mm) 18.2	

Part Number: 33504512

Product Name: Generic Pinheaders

Old/Legacy Part Number: F902300

Part Number:

64 Way M CMC Header



Attributes

Product Family
Generic Pinheaders

Primary Locking Mechanism
MOLDED ON

No. of Ways
64

Weight (g)
37.24

Gender
Male

Terminal 1 Size
0.64

Length (mm)
49.5

Terminal 2 Size
1.5

Width (mm)
68.05

Sealing
Unsealed

Height (mm)
32.2

Primary Material
PBT GF 30

Color
GRAY



Part Number: 33503978

Application: Engine management with gas converter, Automatic gear box management

Product Name: [SICMA Pinheader Sealed Full Interconnect](#)

Old/Legacy Part Number: HCCPHPE24BKA00F

24 way M Hybrid 1.5 2.8 SICMA Interconnect Header Connector

Attributes

Product Family
SICMA

Color
BLACK

Product Series
Pinheader Sealed Full Interconnect

Primary Locking Mechanism
CAVITY LOCK

Max. operating temperature
+125°C

Weight (g)
18.2

Min. operating temperature
-40°C

Terminal 1 Size
1.5

No. of Ways
24

Terminal 2 Size
2.8

Gender
Male

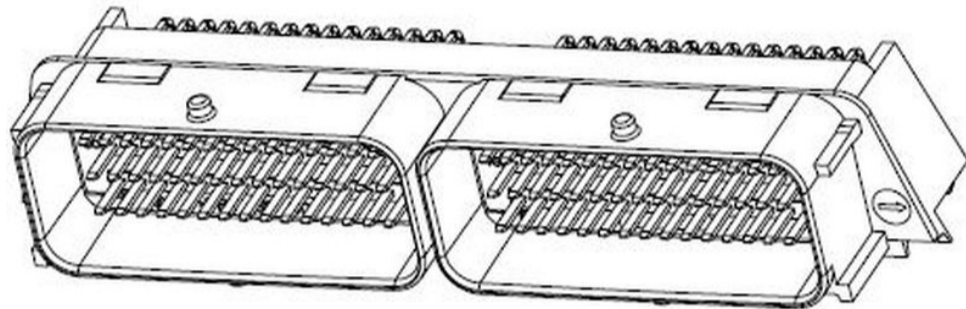
Sealing
Unsealed

Length (mm)
45.5

Primary Material
PBT GF 15

Width (mm)
46.2

Height (mm)
26.5



Part Number: 33503185

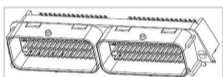
Application: Engine management with gas converter, Automatic gear box management

Product Name: SICMA Pinheader Sealed Full Interconnect

Old/Legacy Part Number: PCC0644457

90 way M SICMA Header Interconnect Connector

This part is not currently offered in our sample program.



Attributes

Product Family SICMA	Height (mm) 34.7
Product Series Pinheader Sealed Full Interconnect	Color BLACK
Max. operating temperature +125°C	Primary Locking Mechanism MOLDED ON
Min. operating temperature -40°C	Weight (g) 84.3
No. of Ways 90	Sealing Unsealed
Gender Male	Primary Material PBT GF 30
Length (mm) 41.08	
Width (mm) 147.16	



Part Number: 33501038

Application: Engine management with gas converter, Automatic gear box management

Product Name: SICMA Pinheader Sealed Full Interconnect

Old/Legacy Part Number: HCCPHPE24GYB90F

24 way M Hybrid 1.5 2.8 SICMA Interconnect Header Connector



Attributes

Product Family
SICMA

Color
GRAY

Product Series
Pinheader Sealed Full Interconnect

Primary Locking Mechanism
CAVITY LOCK

Max. operating temperature
+125°C

Weight (g)
11.2

Min. operating temperature
-40°C

Terminal 1 Size
1.5

No. of Ways
24

Terminal 2 Size
2.8

Gender
Male

Sealing
Unsealed

Length (mm)
46.2

Primary Material
PBT GF 15

Width (mm)
27.3

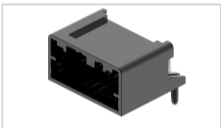
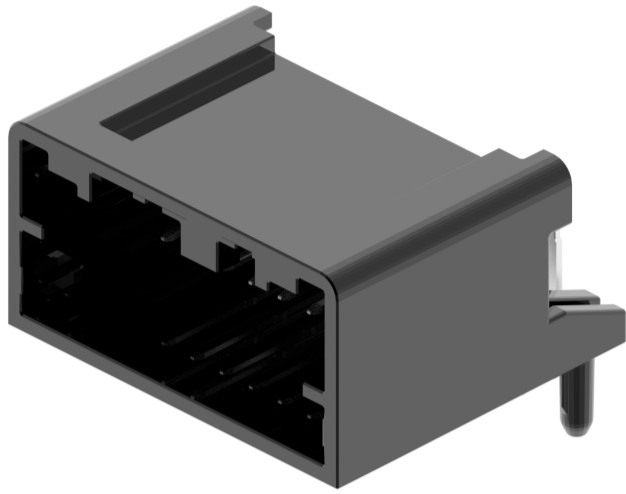
Height (mm)
40.2

Part Number: 35294074

Product Name: [Generic Pinheaders](#)

CONNECTOR 12W M 0.50 HEADER HEADER

This part is not currently offered in our sample program.



Attributes

Product Family
Generic Pinheaders

Weight (g)
2.79

Length (mm)
19.35

Sealing
Unsealed

Width (mm)
22.63

Primary Material
PA6T/66 GF33

Height (mm)
16.34

Coding/Index
1

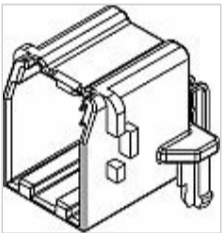
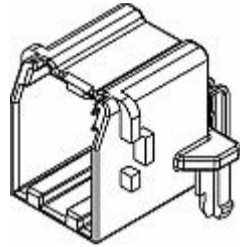
Color
BLACK

Part Number: 15420151

Product Name: Generic Pinheaders

8 Way M MICRO 0.64 Header

Ordering samples is temporarily unavailable for this item



Attributes

Product Family
Generic Pinheaders

Primary Locking Mechanism
MOLDED ON

No. of Ways
8

Weight (g)
5.0098

Cable Exit Orientation
180°

Terminal 1 Size
0.64

Gender
Male

Sealing
Unsealed

Length (mm)
28.36

Primary Material
PA 6T/66 GF 33

Width (mm)
24.54

Coding/Index
102

Height (mm)
20.52

Color
GRAY

Part Number: 12160446

Product Name: [Generic Pinheaders](#)

10 Way M M/P Header

Ordering samples is temporarily unavailable for this item



Attributes

Product Family
Generic Pinheaders

Primary Locking Mechanism
MOLDED ON

No. of Ways
10

Weight (g)
10.6307

Gender
Male

Terminal 1 Size
1.5

Length (mm)
26.8

Sealing
Unsealed

Width (mm)
40.5

Primary Material
PBT GF 30

Height (mm)
21.5

Color
BLACK

Part Number: 13869069

Product Name: [Generic Pinheaders](#)

5 Way F USB 2.0 MINI-B Header

This part is not currently offered in our sample program.



Attributes

Product Family
Generic Pinheaders

Color
BROWN

No. of Ways
5

Primary Locking Mechanism
MOLDED ON

Gender
Female

Weight (g)
4.343

Length (mm)
24.62

Sealing
Unsealed

Width (mm)
16

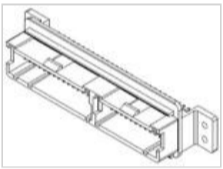
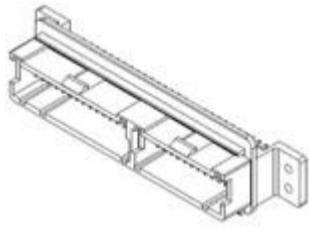
Primary Material
PA 6T/66 GF 33

Height (mm)
12.94

Part Number: 12177020

Product Name: Generic Pinheaders

56 Way M MIC/P 100W Header



Attributes

Product Family
Generic Pinheaders

Primary Locking Mechanism
MOLDED ON

No. of Ways
56

Weight (g)
27.3258

Gender
Male

Terminal 1 Size
1

Length (mm)
106.9

Sealing
Unsealed

Width (mm)
25.5

Primary Material
PBT GF 30

Height (mm)
29.1

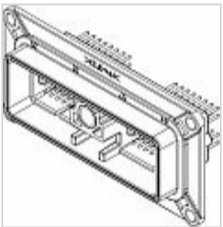
Color
RED

Part Number: 12244365

Product Name: Generic Pinheaders

64 Way M MIC/P 100W Header

This part is not currently offered in our sample program.



Attributes

Product Family
Generic Pinheaders

Primary Locking Mechanism
MOLDED ON

No. of Ways
64

Weight (g)
74.231

Gender
Male

Terminal 1 Size
1

Length (mm)
37.97

Sealing
Unsealed

Width (mm)
103.12

Primary Material
PA 6T/66 GF 33

Height (mm)
50.48

Color
GRAY

Part Number: 12146724

Product Name: Generic Pinheaders

8 Way M M/P 280 Header



Attributes

Product Family
Generic Pinheaders

Primary Locking Mechanism
MOLDED ON

No. of Ways
8

Weight (g)
19.987

Cable Exit Orientation
180°

Terminal 1 Size
2.8

Gender
Male

Sealing
Unsealed

Length (mm)
43.3

Primary Material
PA 66

Width (mm)
44.7

Coding/Index
101

Height (mm)
27.9

Color
GRAY

Part Number: 12110440

Product Name: Generic Pinheaders

4 Way M M/P 280 Header



Attributes

Product Family
Generic Pinheaders

Color
BLACK

No. of Ways
4

Primary Locking Mechanism
MOLDED ON

Cable Exit Orientation
180°

Weight (g)
5.2576

Gender
Male

Terminal 1 Size
2.8

Length (mm)
25.7

Sealing
Unsealed

Width (mm)
26.7

Primary Material
PA 66

Height (mm)
17.9

Part Number: 12092320

Product Name: [Generic Pinheaders](#)

24 Way M MIC/P 100W Header

This part is not currently offered in our sample program.



Attributes

Product Family Generic Pinheaders	Primary Locking Mechanism MOLDED ON
No. of Ways 24	Weight (g) 14.601991
Cable Exit Orientation 180°	Terminal 1 Size 1
Gender Male	Sealing Unsealed
Length (mm) 25.7	Primary Material PBT GF 30
Width (mm) 53.8	Coding/Index 101
Height (mm) 23	
Color BLACK	

Part Number: 12052130

Product Name: [Generic Pinheaders](#)

48 Way M M/P 150 Header

This part is not currently offered in our sample program.



Attributes

Product Family
Generic Pinheaders

Color
BLACK

No. of Ways
48

Primary Locking Mechanism
MOLDED ON

Cable Exit Orientation
180°

Weight (g)
99.2

Gender
Male

Terminal 1 Size
1.5

Length (mm)
39.5

Sealing
Unsealed

Width (mm)
114

Primary Material
PBT

Height (mm)
37.2



Part Number: 12040923

Product Name: [Generic Pinheaders](#)

18 Way 1.5 M/P 150 Header

This part is not currently offered in our sample program.



Attributes

Product Family
Generic Pinheaders

Primary Locking Mechanism
LOCKING LANCE

No. of Ways
18

Weight (g)
35

Gender
Male

Terminal 1 Size
1.5

Length (mm)
39.5

Sealing
Unsealed

Width (mm)
54

Primary Material
PET GF 30

Height (mm)
37.2

Color
BLACK

Алматы (7273)495-231
Ангарск (3955)60-70-56
Архангельск (8182)63-90-72
Астрахань (8512)99-46-04
Барнаул (3852)73-04-60
Белгород (4722)40-23-64
Благовещенск (4162)22-76-07
Брянск (4832)59-03-52
Владивосток (423)249-28-31
Владикавказ (8672)28-90-48
Владимир (4922)49-43-18
Волгоград (844)278-03-48
Вологда (8172)26-41-59
Воронеж (473)204-51-73
Екатеринбург (343)384-55-89

Иваново (4932)77-34-06
Ижевск (3412)26-03-58
Иркутск (395)279-98-46
Казань (843)206-01-48
Калининград (4012)72-03-81
Калуга (4842)92-23-67
Кемерово (3842)65-04-62
Киров (8332)68-02-04
Коломна (4966)23-41-49
Кострома (4942)77-07-48
Краснодар (861)203-40-90
Красноярск (391)204-63-61
Курск (4712)77-13-04
Курган (3522)50-90-47
Липецк (4742)52-20-81

Магнитогорск (3519)55-03-13
Москва (495)268-04-70
Мурманск (8152)59-64-93
Набережные Челны (8552)20-53-41
Нижний Новгород (831)429-08-12
Новокузнецк (3843)20-46-81
Ноябрьск (3496)41-32-12
Новосибирск (383)227-86-73
Омск (3812)21-46-40
Орел (4862)44-53-42
Оренбург (3532)37-68-04
Пенза (8412)22-31-16
Петрозаводск (8142)55-98-37
Псков (8112)59-10-37

Пермь (342)205-81-47
Ростов-на-Дону (863)308-18-15
Рязань (4912)46-61-64
Самара (846)206-03-16
Саранск (8342)22-96-24
Санкт-Петербург (812)309-46-40
Саратов (845)249-38-78
Севастополь (8692)22-31-93
Симферополь (3652)67-13-56
Смоленск (4812)29-41-54
Сочи (862)225-72-31
Ставрополь (8652)20-65-13
Сургут (3462)77-98-35
Сыктывкар (8212)25-95-17
Тамбов (4752)50-40-97

Тверь (4822)63-31-35
Тольятти (8482)63-91-07
Томск (3822)98-41-53
Тула (4872)33-79-87
Тюмень (3452)66-21-18
Ульяновск (8422)24-23-59
Улан-Удэ (3012)59-97-51
Уфа (347)229-48-12
Хабаровск (4212)92-98-04
Чебоксары (8352)28-53-07
Челябинск (351)202-03-61
Череповец (8202)49-02-64
Чита (3022)38-34-83
Якутск (4112)23-90-97
Ярославль (4852)69-52-93

Россия +7(495)268-04-70

Казахстан +7(7172)727-132

Киргизия +996(312)96-26-47

www.aptiv.nt-rt.ru | | avi@nt-rt.ru